

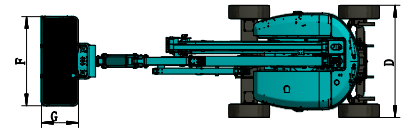
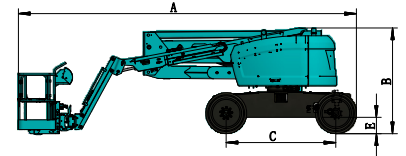
SWA16J

Self-Propelled Curved Arm Type Aerial Work Platform

SUNWARD

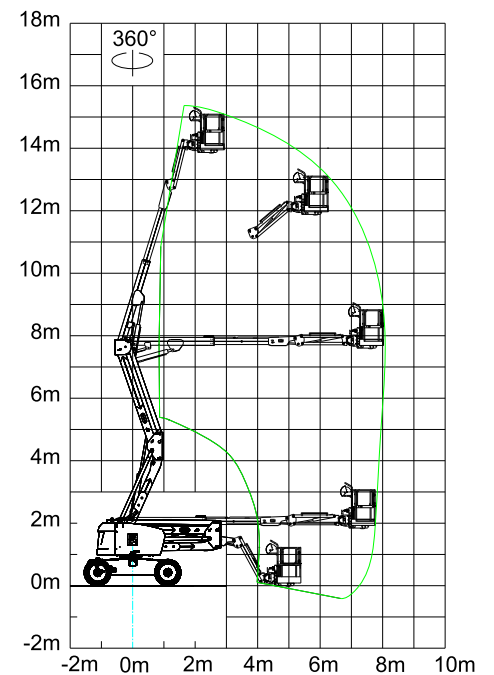
Dimension

Maximum platform height		14m
Maximum working height		16m
Maximum horizontal span		8.02m
Maximum horizontal span height		7.6m
A	Length - retracted	6.93m
	Length - transported	5.9m
B	Height - retracted	2.17m
C	Wheel base	2.25m
D	Overall width	2.3m
E	Ground clearance - intermediate	0.35m
F	Length of working platform	1.83m
G	Width of working platform	0.76m



Performance

Rated load	250kg
Maximum number of workers	2
Platform rotation	160°
Rotary turntable	360° continuously
Turntable tail swing	0
Travel speed (retracted)	6.8km/h
Travel speed (extended)	1.1km/h
Turning radius (inner/outer)	2.09m / 4.98m
Gradeability - four-wheel drive - retracted	45%
Maximum allowable working angle	5°
Power source	Kubota v2403
Engine power	36.4kW
Engine power speed	2600rpm
Auxiliary power unit	12V
Hydraulic oil tank capacity	82L
Fuel tank capacity	63.8L
Tyre	33×12-20
Overall weight	7500kg



* Working height is equal to platform height plus 2m.

* Gradeability is suitable for driving on slopes; for details, please refer to the Operator's Manual for slope grades.

SWA16J

Self-Propelled Curved Arm Type Aerial Work Platform



Standard features

◆ Proportional control	◆ Emergency pump	◆ Horn	◆ Load-sensing system
◆ Standard 4X4 drive	◆ Swing axle chassis	◆ Strobe light	◆ Tilt protection system
◆ Spin out engine tray	◆ Working timer	◆ Hydrostatic pressure automatic leveling system	◆ Remote communication system
◆ Turntable 360° continuous rotation	◆ Buzzer	◆ Emergency descending system	◆ Fault diagnosis system

Options features

◆ Air pipe to platform	◆ AC power connected to the platform	◆ GPS tracking system	◆ Platform working lamp
◆ Biodegradable hydraulic oil	◆ Foam filled tyre		

SUNWARD EUROPE HEAVY INDUSTRY N.V

Add: Add:Nijvenheidsark 3,3580 Beringen,Belgium

Tel: (0032-011)434666

E-mail:eu@sunward.com

SUNWARD